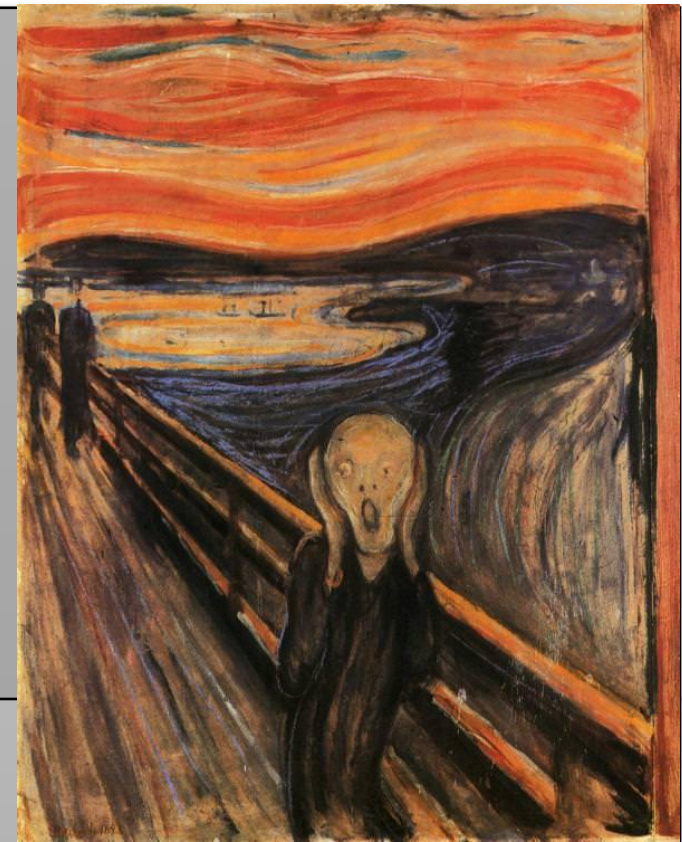


**Monday, August 6, 2018** GA

- Check the board for missing projects
- Complete warm-up
- Collect project from the drawer

Answer the following in 2-3 complete sentences.

What is the MOOD of this painting? Which ELEMENTS OF ART contribute to this mood? What would you title this work?



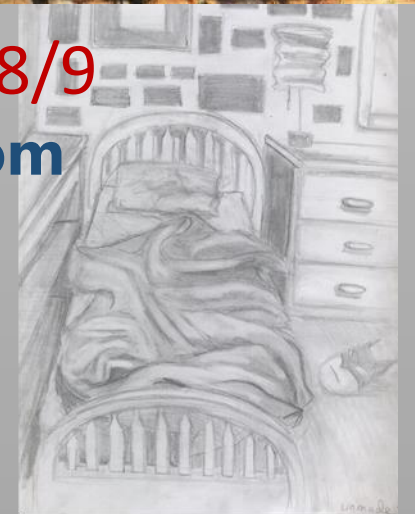
Today, we will:

Work on TSS Project

**SB #2: Unmade bed, DUE 8/8 or 8/9**

**An unmade bed or messy bedroom**

- Fill the page
- Add shading or color

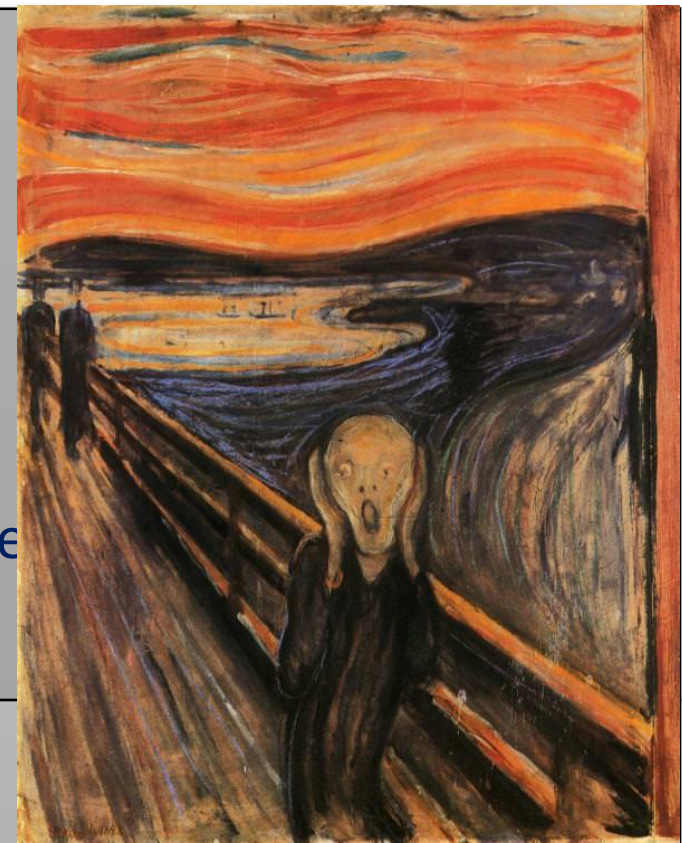


**Monday, August 6, 2018** Intro

- Complete warm-up.
- Clear space expect for a non-mechanical pencil and your colored pencils.

Answer the following in 3-5 complete sentences.

What is the MOOD of this painting? Which ELEMENTS OF ART contribute to this mood? What would you title this work?



Today, we will:

Introduce and practice shading

**SB #2 Stack of books,  
DUE 8/9**

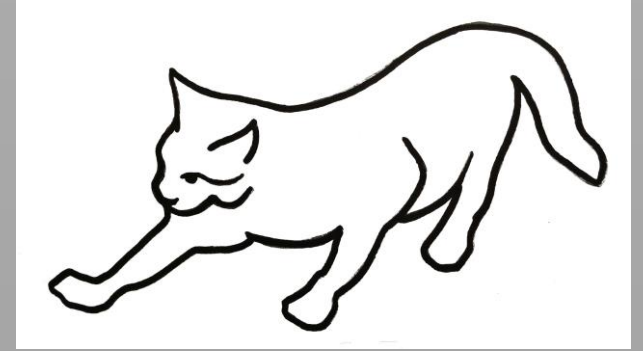
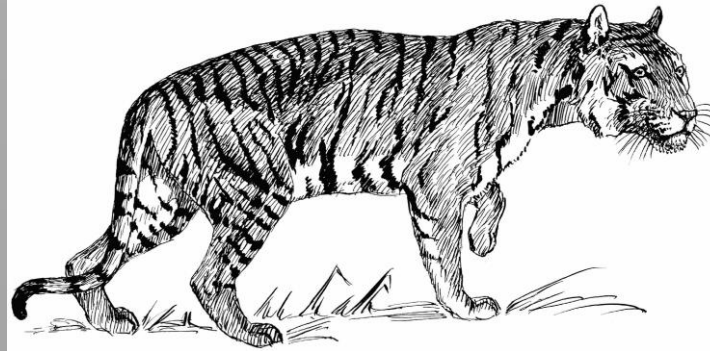
- Minimum of 5 books
- Include details (titles, etc.)
- Fill the page
- Shade or color



**Tuesday, August 7, 2018** GA

- Complete warm-up
- Collect project from the drawer

Answer the following in 2-3 complete sentences.  
Compare these 2 cat drawings. Use ELEMENTS vocabulary.



Today, we will:

Work on TSS Project

**SB #2: Unmade bed, DUE 8/8 or 8/9**

**An unmade bed or messy bedroom**

- Fill the page
- Add shading or color





**Tuesday, August 7, 2018** Intro

- Complete warm-up.
- Clear space expect for a non-mechanical pencil and your colored pencils.

Answer the following in 3-5 complete sentences. **What do you think is the most important element of art AND principle of design in this art by pop artist Keith Haring? Why?**

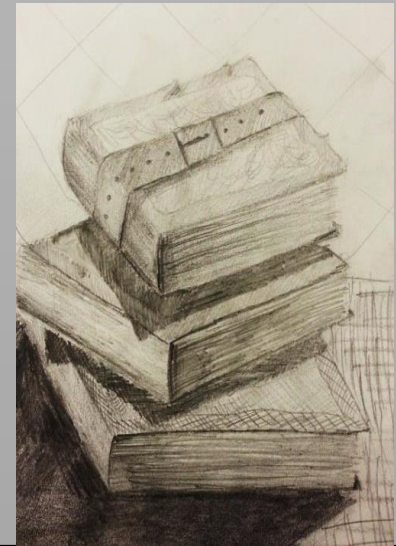


Today, we will:

Introduce contour line

SB #2 Stack of books,  
DUE 8/9

- Minimum of 5 books
- Include details (titles, etc.)
- Fill the page
- Shade or color



Wed., August 8, 2018 GA

- Put sketchbook in the crate on the front table.
- Collect project from the drawer.



Today, we will:

Work on TSS Project  
DUE FRIDAY

SB #3: Fruits and Vegetables, DUE 8/15

**Draw a variety of fruit/vegetables**

- Fill the page
- Make sure it overlaps
- Use a variety of sizes and shapes
- Add shading or color



Thurs., August 9, 2018 GA

- Put sketchbook in the crate on the front table.
- Collect project from the drawer.



Today, we will:

Work on TSS Project  
DUE FRIDAY

SB #3: Fruits and Vegetables, DUE 8/15

**Draw a variety of fruit/vegetables**

- Fill the page
- Make sure it overlaps
- Use a variety of sizes and shapes
- Add shading or color





**Thursday, August 9, 2018** Intro

➤ Open sketchbook to contour hand drawing.

Me stressing over things I can easily resolve

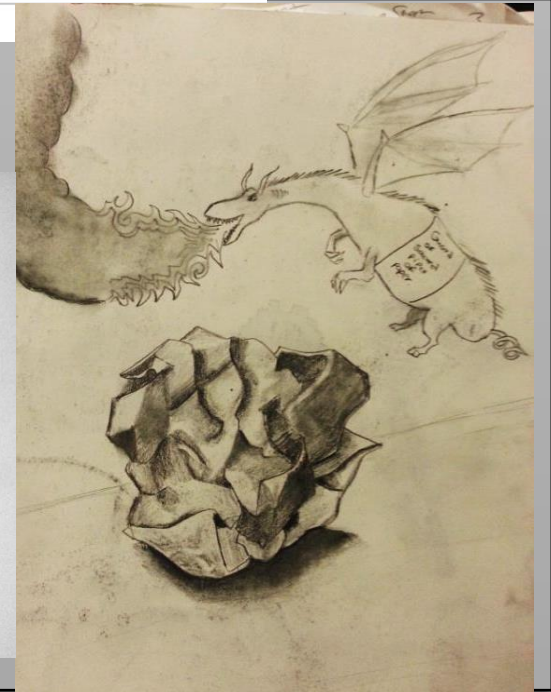
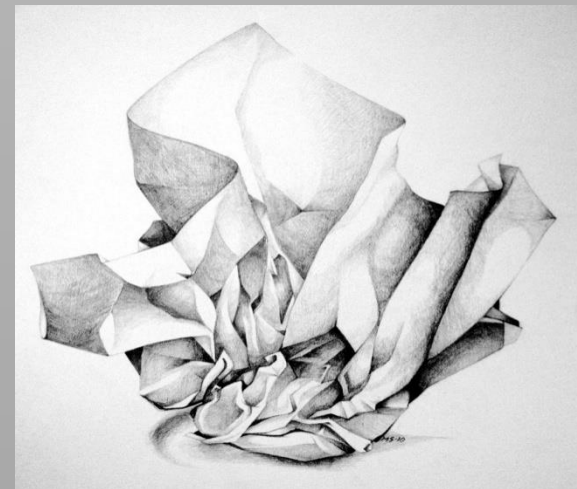


Today, we will:

Begin the CONTOUR LINE project.

SB #3 Crumpled Paper, DUE 8/9

- Fill the page
- Shade



Friday, August 10, 2018 GA

- Collect your sketchbook.
- Complete the warm-up.
- Collect project from the drawer.

Answer in 2-3 complete sentences.

How does the artist suggest FORM in this artwork? What is another way to do so?



Today, we will:

Work on TSS Project  
DUE TODAY

**SB #3: Fruits and Vegetables, DUE 8/15**

**Draw a variety of fruit/vegetables**

- Fill the page
- Make sure it overlaps
- Use a variety of sizes and shapes
- Add shading or color





Friday, August 10, 2018 **Intro**

- Collect sketchbook from front table.
- Collect project from the drawer.

Today, we will:

Work on the CONTOUR LINE project.



Answer in 3-5 complete sentences.

What do you think is the most important PRINCIPLE of DESIGN? Why?

Gustav Klimt,  
The Kiss, 1907-08

SB #3 Crumpled Paper,  
DUE 8/9

- Fill the page
- Shade

